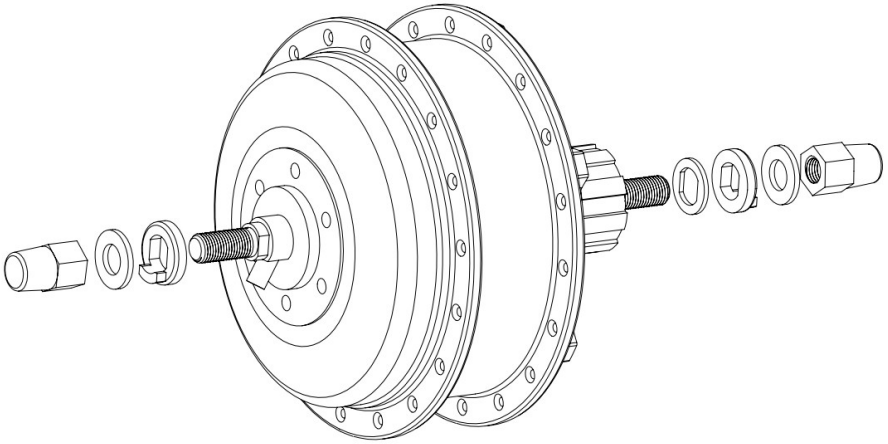


# MG310 Installation Guide

Rev 1

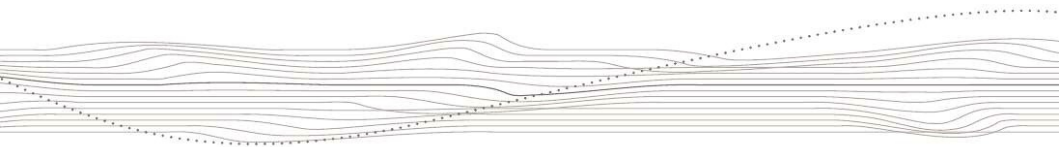


## 1. Parts Included

- G310 Hub Motor
- Axle Spacer Washer (cassette side only)
- 2x Tabbed Washers
- 2x M10 Washers
- 2x Acorn Nuts

## 2. Tools Needed

- Adjustable Wrench



# MG310 Installation Guide

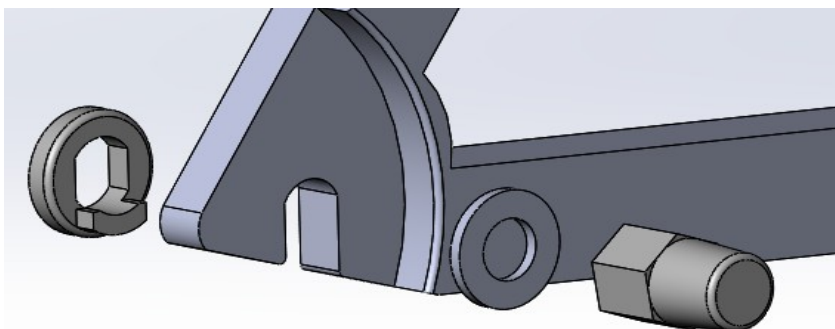
Rev 1



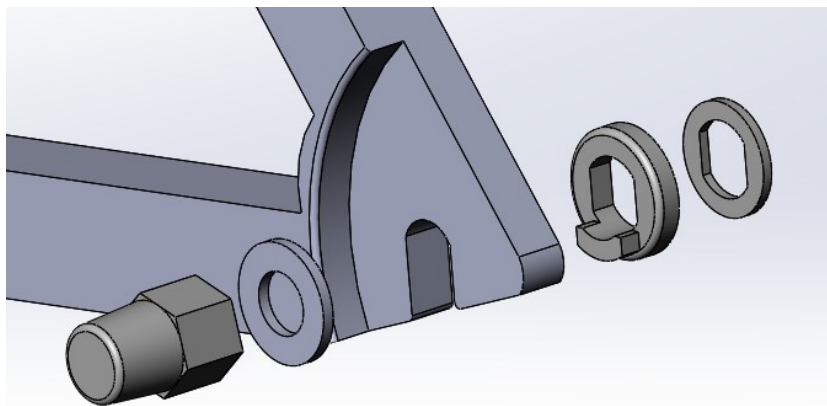
## 3. Installation

Install the disc rotor if the bike has disc brakes – make sure to remove the disc rotor spacer in this case.

The order of hardware on the cable side is tabbed washer, dropout, M10 washer, acorn nut. Ensure the tabbed washer and motor are oriented such that the cable exits downwards. Upwards orientation of the cable can cause water ingress.

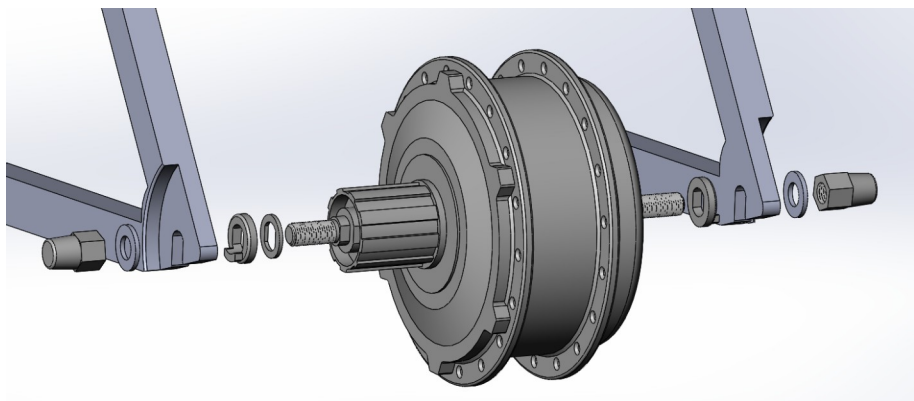


On the non-cable side, the order of hardware is axle spacer washer, tabbed washer, dropout, M10 washer, acorn nut.



# MG310 Installation Guide

Rev 1



Once the motor is installed in the dropouts and the hardware is in place, tighten the axle nuts to 40Nm (30 ft-lb).

## Cassette Compatibility

7 speed cassettes usually require a large spacer on the cassette freehub body for correct fit (this will be included and pre-installed if you purchase the motor and 7 speed cassette from us at the same time). This spacer is also available on our website.

9-11 speed cassettes usually require a spacer on the axle (provided) to prevent the cassette from rubbing against the inside of the dropouts.

## 3. Additional Notes

If the motor was purchased from Grin pre-laced, our wheelbuilder will have dished the wheel assuming the inclusion of the axle spacer washer on the cassette side. Else if you are doing the wheelbuild yourself, be aware that adding this axle spacer (as needed for wider 9-11 speed cassettes) will have a small impact on the correct dishing of the wheel, equivalent to half the width of the spacer (0.75mm or 1/32").