

PART NO:
Grin All-Axle V3 Front Hub Motor

REVISION:
0

DRAWN: Justin L-E.

MATERIAL: N/A

DATE: 09-24-2024

WEIGHT: ~4.0kg

www.ebikes.ca

SURFACE
FINISH: Anodized Alum

DESCRIPTION:
100mm Quick Release Adapters

Relevant dimension drawing in mm
for external use

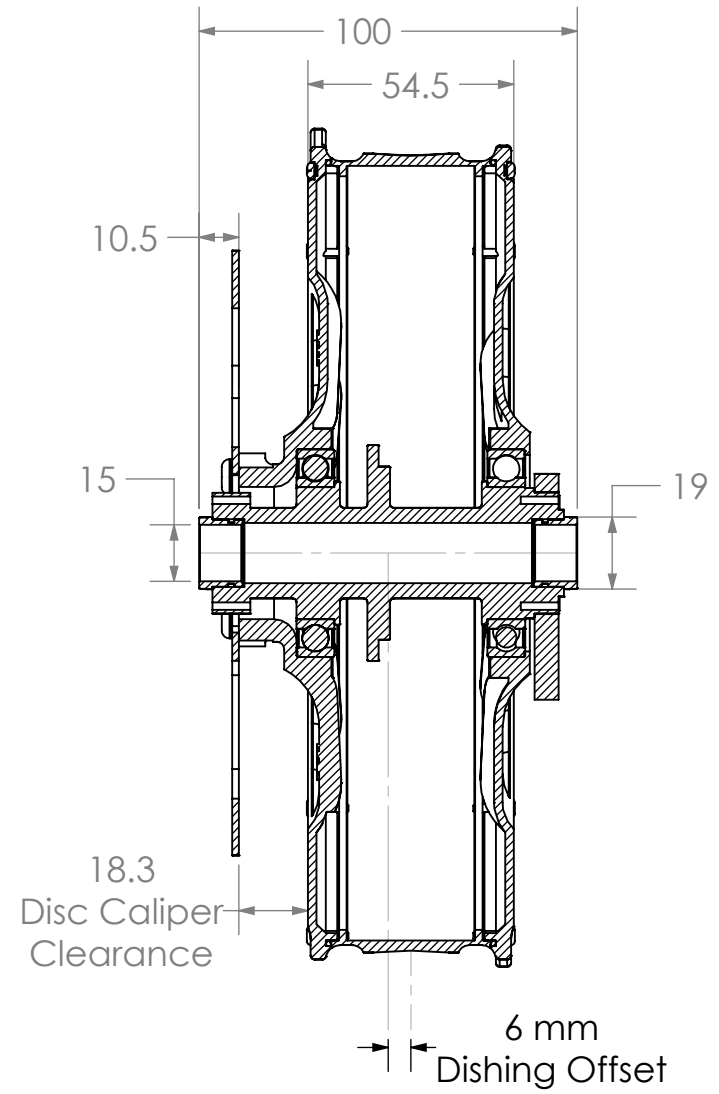
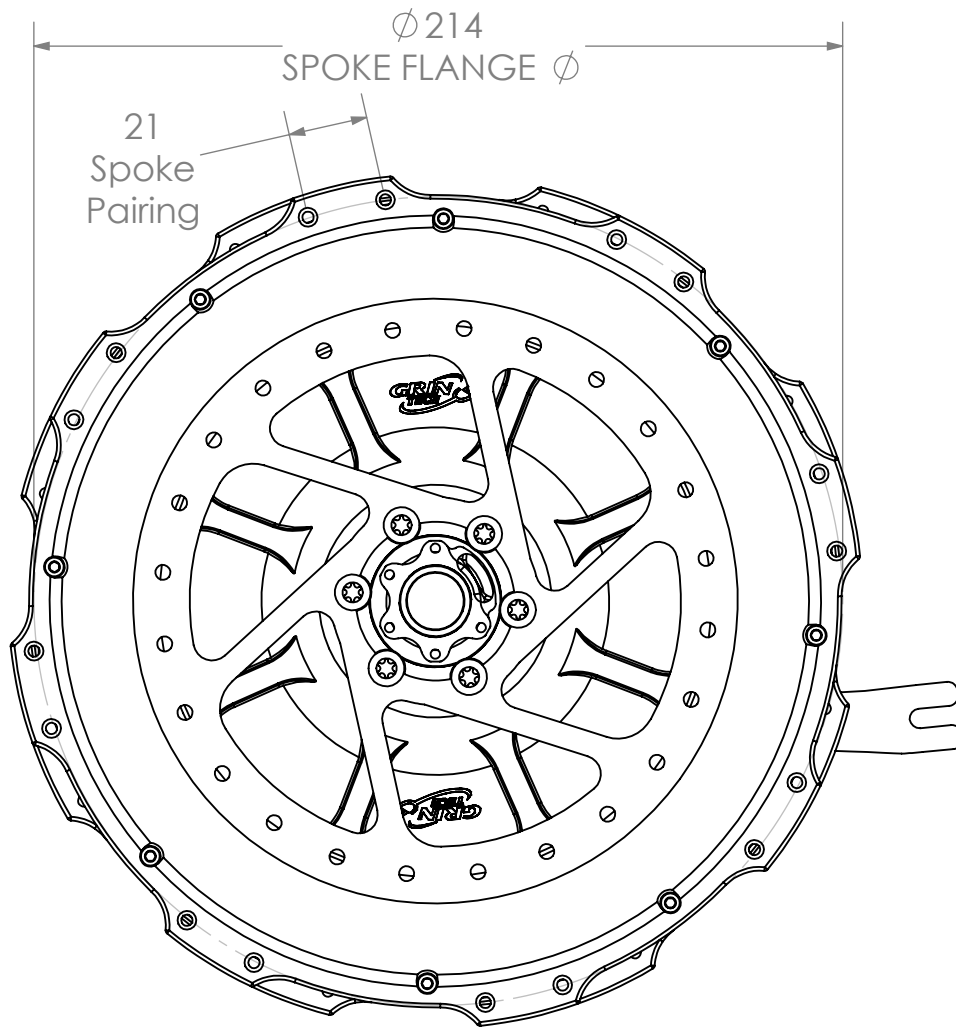
Designed, Drawn and Made in
Canada

SCALE: 1:2



REFERENCE USE ONLY

THE INFORMATION CONTAINED IN THIS
DRAWING IS THE SOLE PROPERTY OF
GRIN TECHNOLOGIES. ANY
REPRODUCTION IN PART OR AS A WHOLE
WITHOUT THE WRITTEN PERMISSION OF
GRIN TECHNOLOGIES IS
PROHIBITED.



PART NO:
Grin All-Axle V3 Front Hub Motor

REVISION:
0

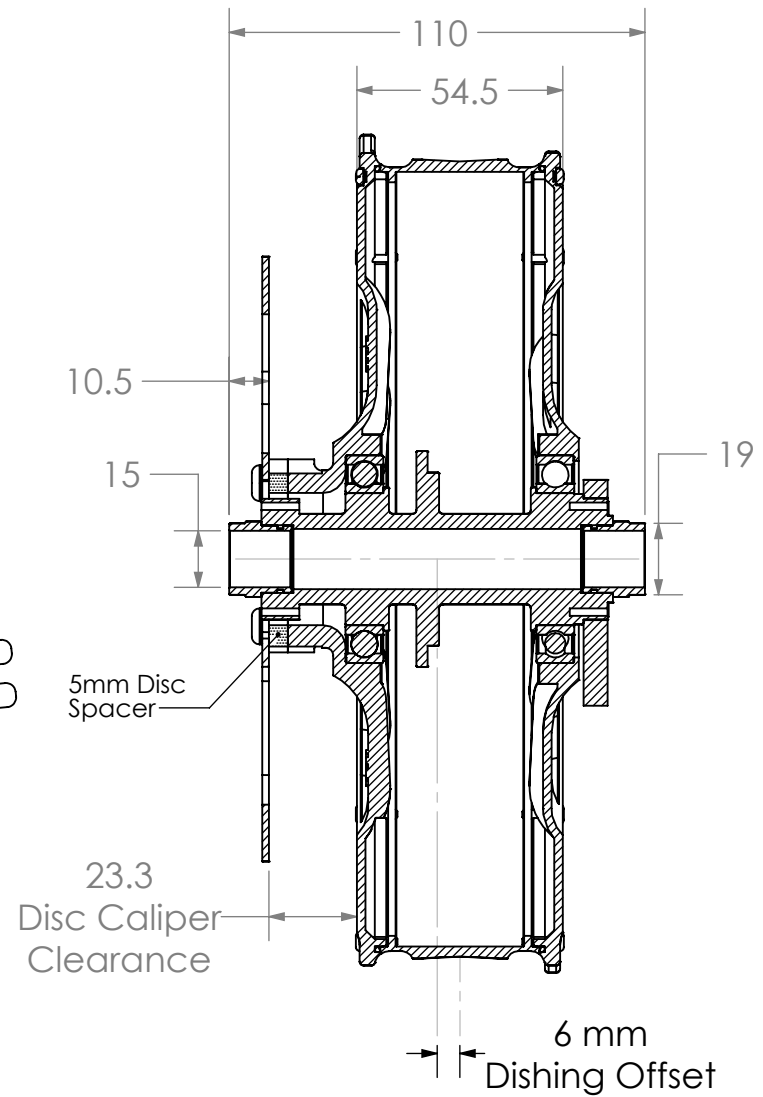
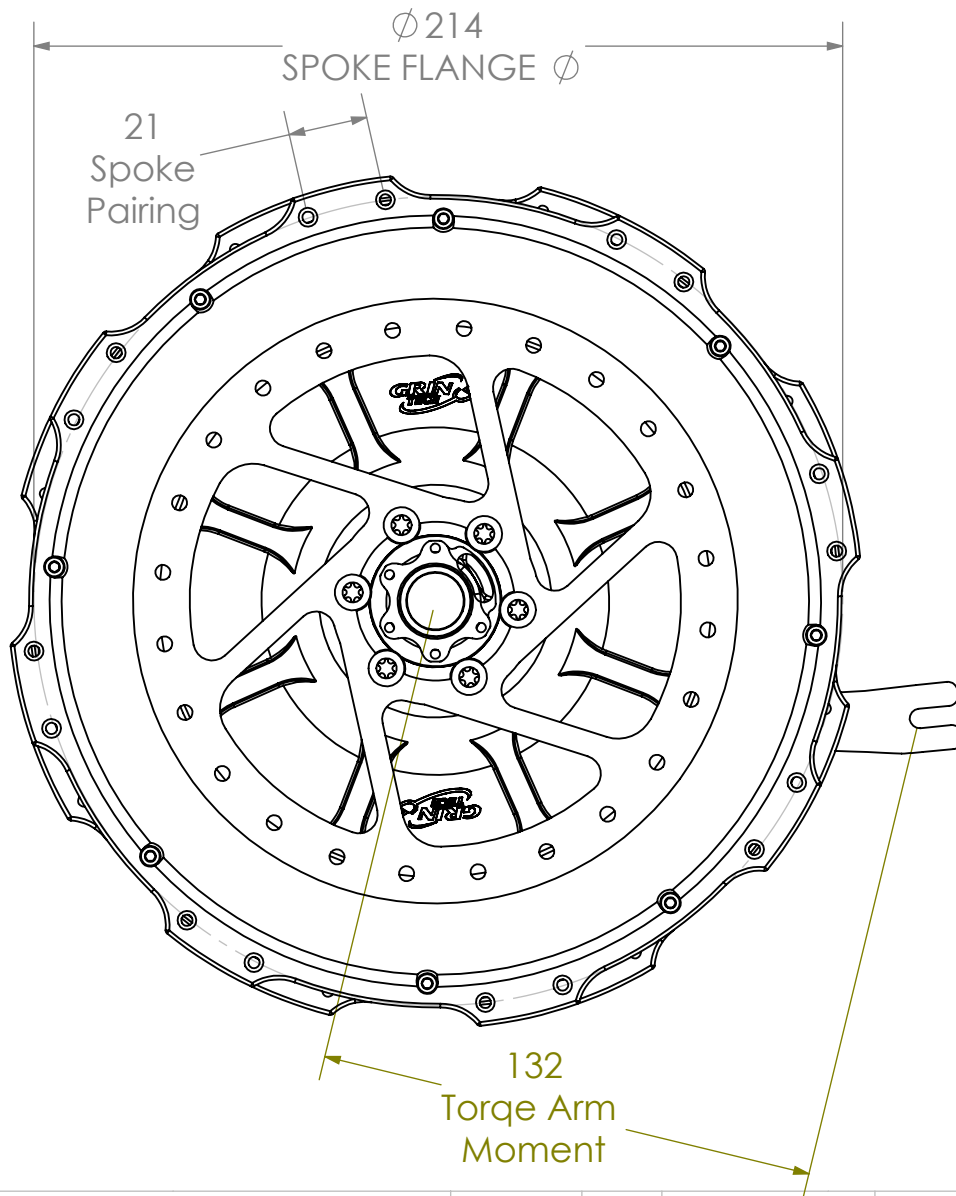
DRAWN: Justin L-E.
DATE: 09-24-2024
www.ebikes.ca
Relevant dimension drawing in mm for external use
Designed, Drawn and Made in Canada

MATERIAL: N/A
WEIGHT: ~4.0kg
SURFACE FINISH: Anodized Alum
SCALE: 1:2

DESCRIPTION:
15x100 Thru Axle Adapters



REFERENCE USE ONLY
THE INFORMATION CONTAINED IN THIS DRAWING IS THE SOLE PROPERTY OF GRIN TECHNOLOGIES. ANY REPRODUCTION IN PART OR AS A WHOLE WITHOUT THE WRITTEN PERMISSION OF GRIN TECHNOLOGIES IS PROHIBITED.



PART NO:
Grin All-Axle V3 Front Hub Motor

REVISION:
0

DRAWN: Justin L-E.

MATERIAL: N/A

DATE: 09-24-2024

WEIGHT: ~4.0kg

www.ebikes.ca

SURFACE FINISH: Anodized Alum

Relevant dimension drawing in mm for external use

SCALE: 1:2

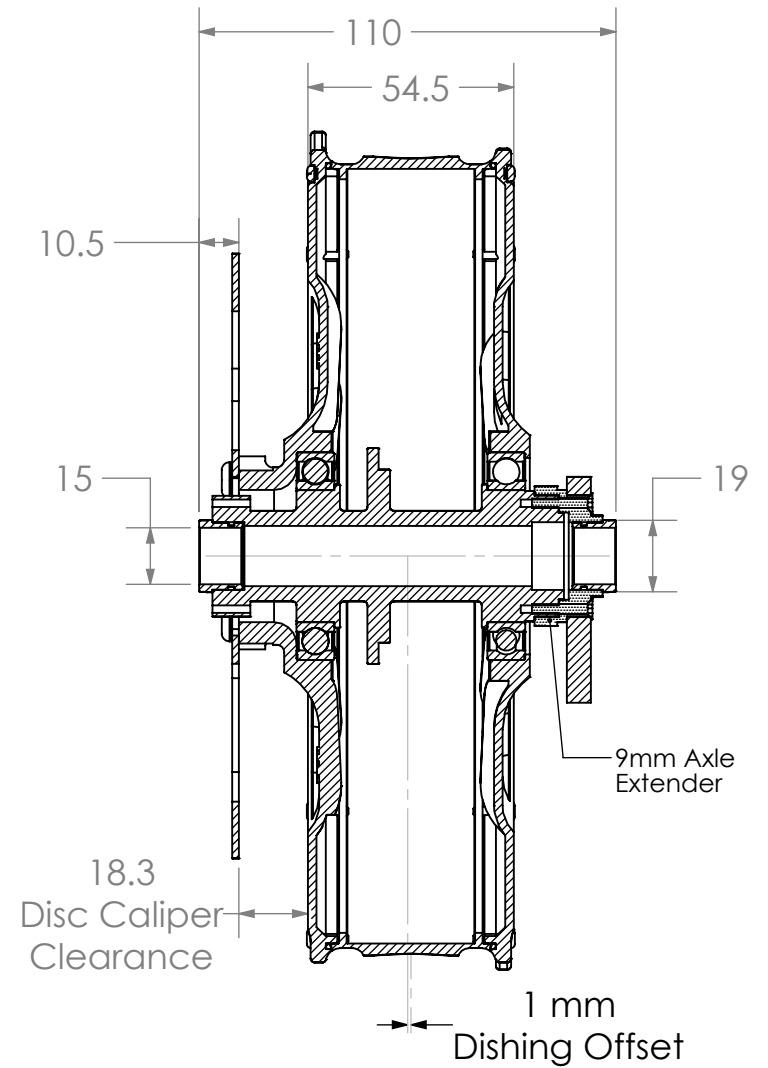
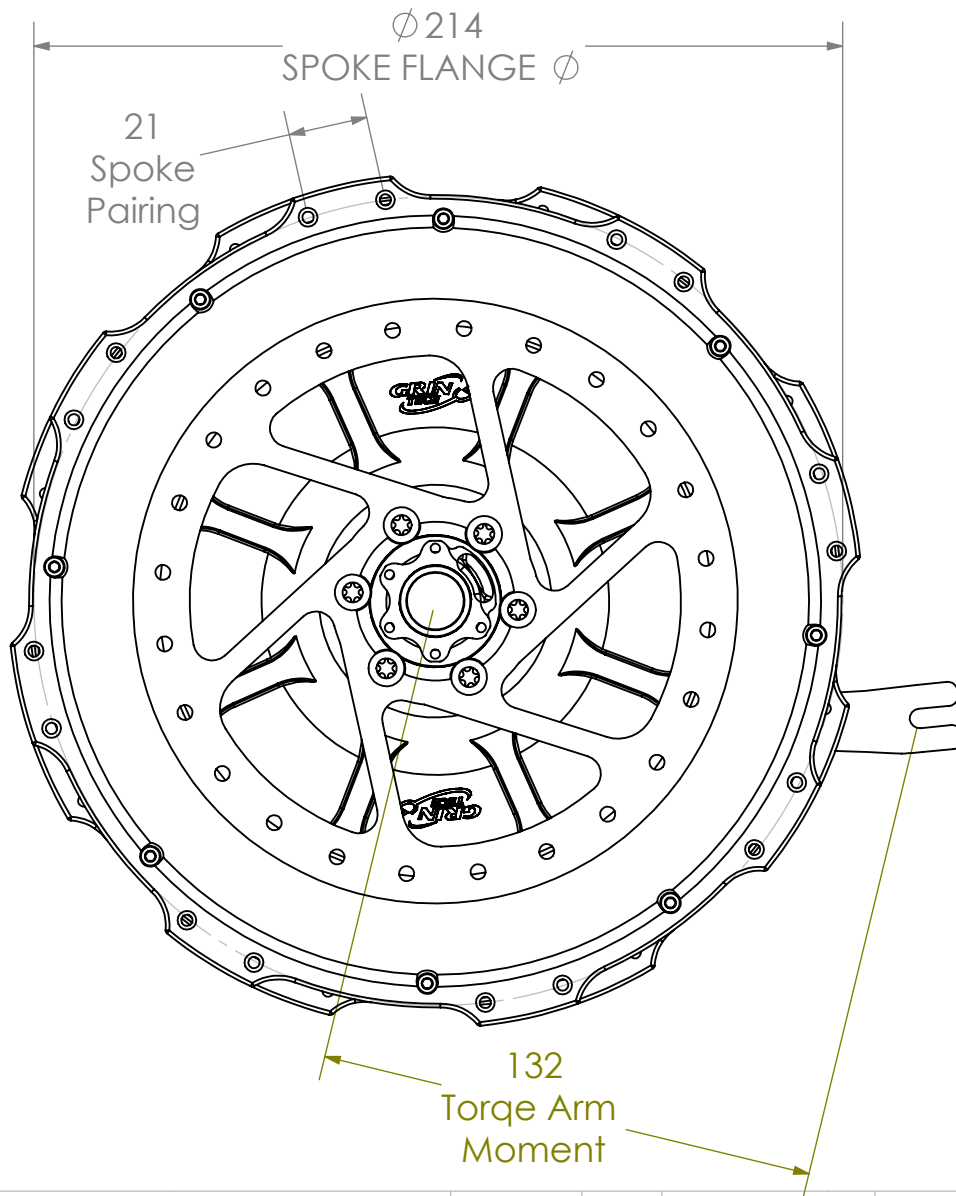
Designed, Drawn and Made in Canada

DESCRIPTION:
15x110 Boost Adapters, -Even Spacing



REFERENCE USE ONLY

THE INFORMATION CONTAINED IN THIS DRAWING IS THE SOLE PROPERTY OF GRIN TECHNOLOGIES. ANY REPRODUCTION IN PART OR AS A WHOLE WITHOUT THE WRITTEN PERMISSION OF GRIN TECHNOLOGIES IS PROHIBITED.



PART NO:
Grin All-Axle V3 Front Hub Motor

REVISION:
0

DRAWN: Justin L-E.

MATERIAL: N/A

DATE: 09-24-2024

WEIGHT: ~4.0kg

www.ebikes.ca

SURFACE FINISH: Anodized Alum

DESCRIPTION:
15x110 Boost Adapters - Offset Spacing

Relevant dimension drawing in mm for external use

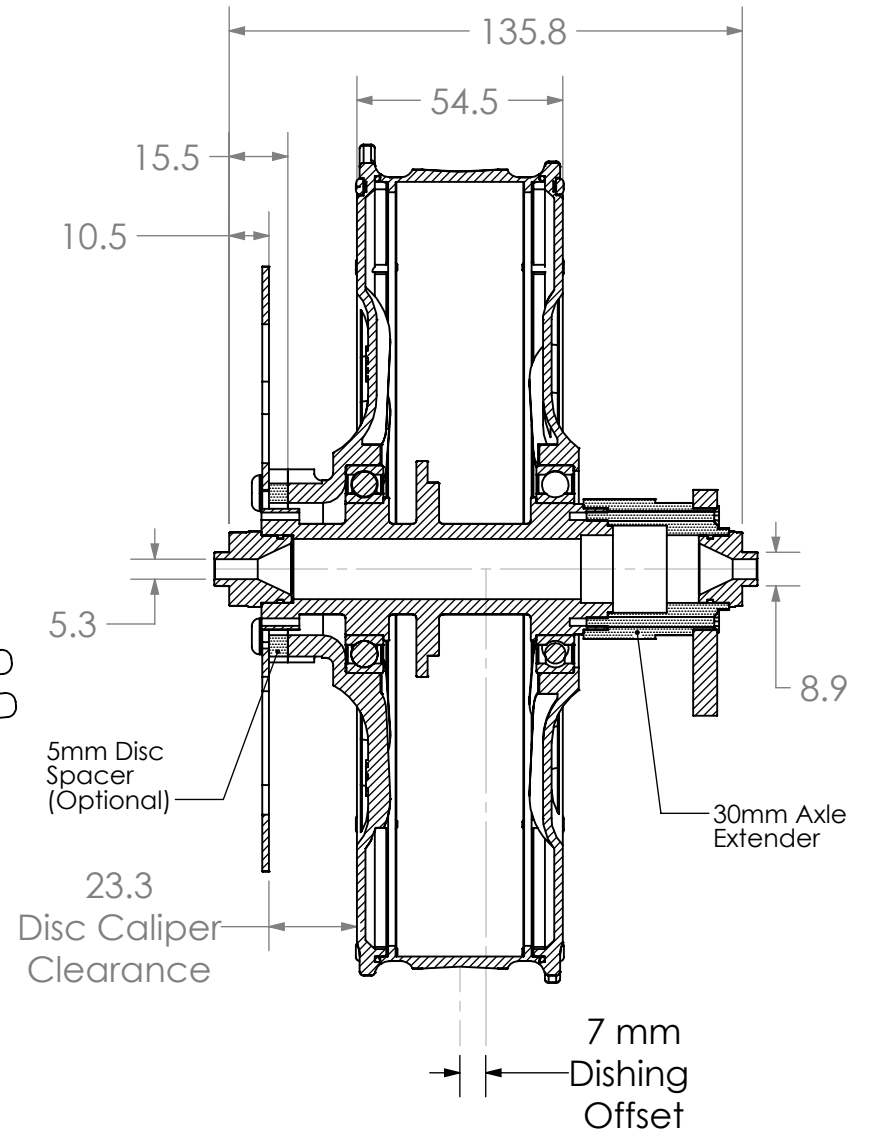
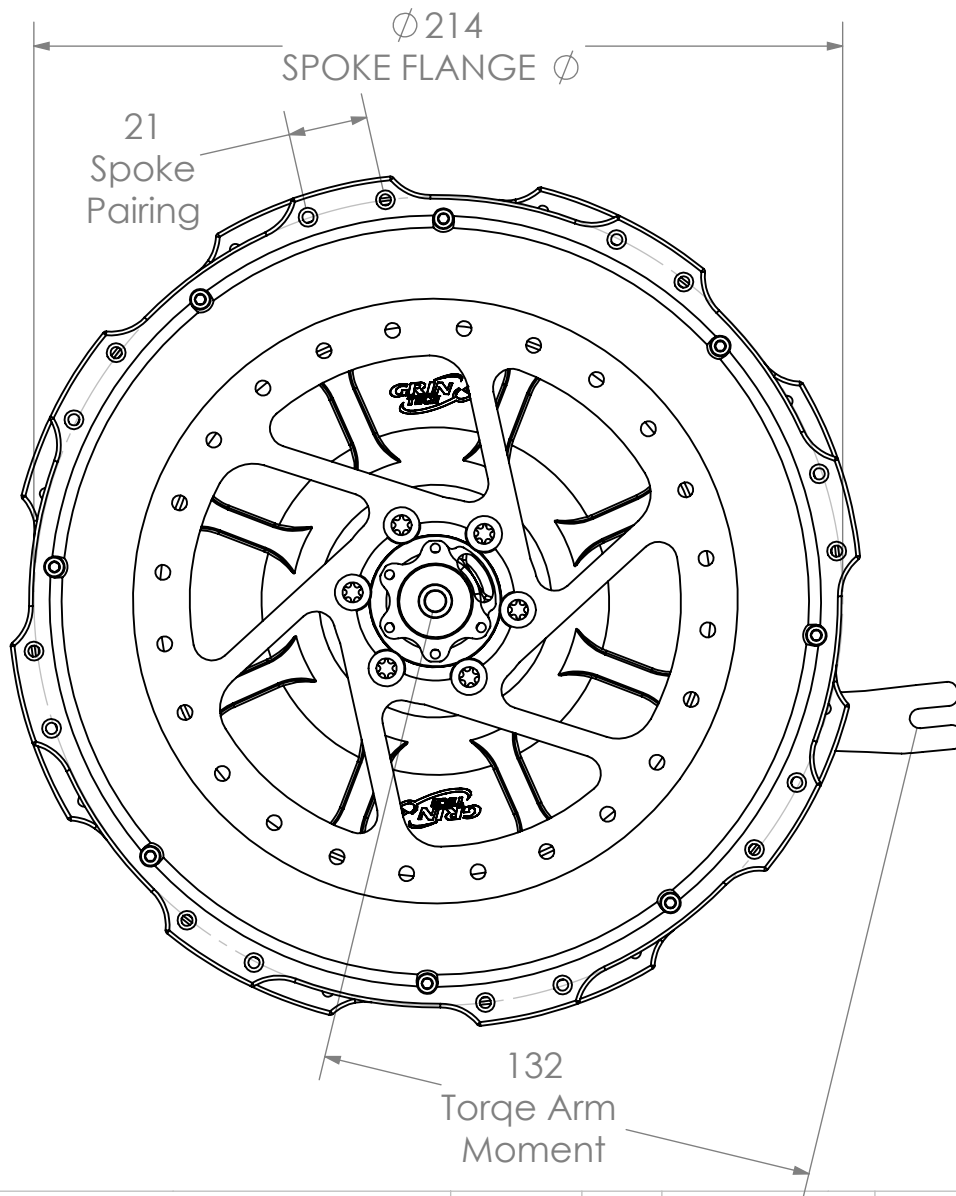
Designed, Drawn and Made in Canada

SCALE: 1:2



REFERENCE USE ONLY

THE INFORMATION CONTAINED IN THIS DRAWING IS THE SOLE PROPERTY OF GRIN TECHNOLOGIES. ANY REPRODUCTION IN PART OR AS A WHOLE WITHOUT THE WRITTEN PERMISSION OF GRIN TECHNOLOGIES IS PROHIBITED.



PART NO:
Grin All-Axle V3 Front Hub Motor

REVISION:
0

DRAWN: Justin L-E.

MATERIAL: N/A

DATE: 09-24-2024

WEIGHT: ~4.0kg

www.ebikes.ca

SURFACE FINISH: Anodized Alum

DESCRIPTION:
135mm Quick Release Adapters

Relevant dimension drawing in mm for external use

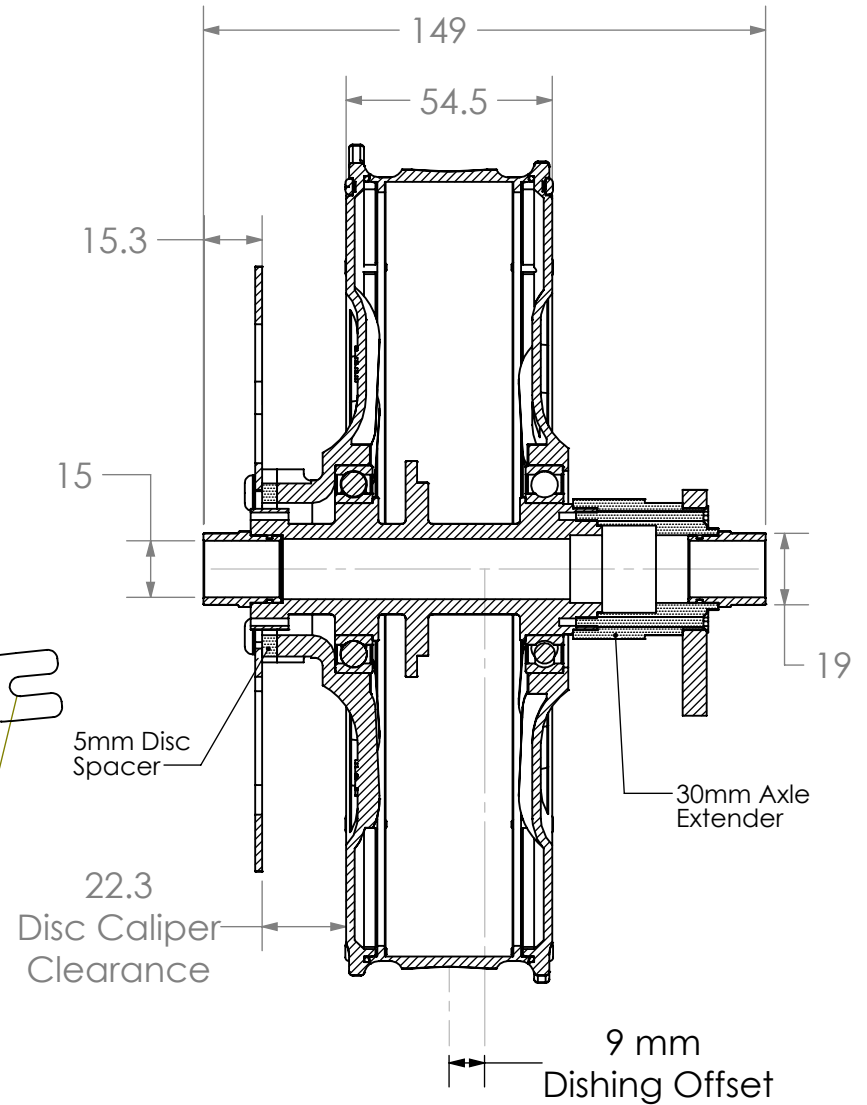
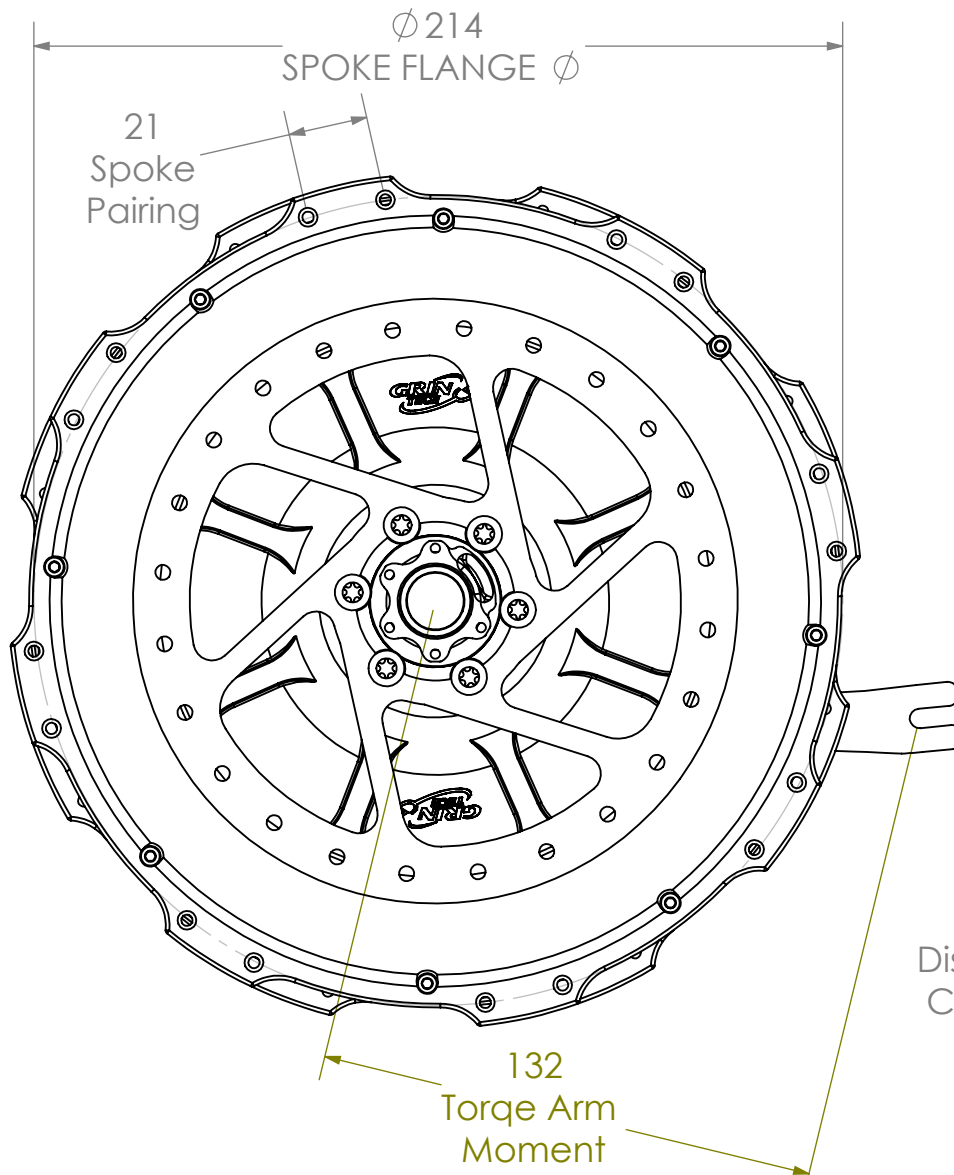
SCALE: 1:2

Designed, Drawn and Made in Canada



REFERENCE USE ONLY

THE INFORMATION CONTAINED IN THIS DRAWING IS THE SOLE PROPERTY OF GRIN TECHNOLOGIES. ANY REPRODUCTION IN PART OR AS A WHOLE WITHOUT THE WRITTEN PERMISSION OF GRIN TECHNOLOGIES IS PROHIBITED.



PART NO:
Grin All-Axle V3 Front Hub Motor

REVISION:
0

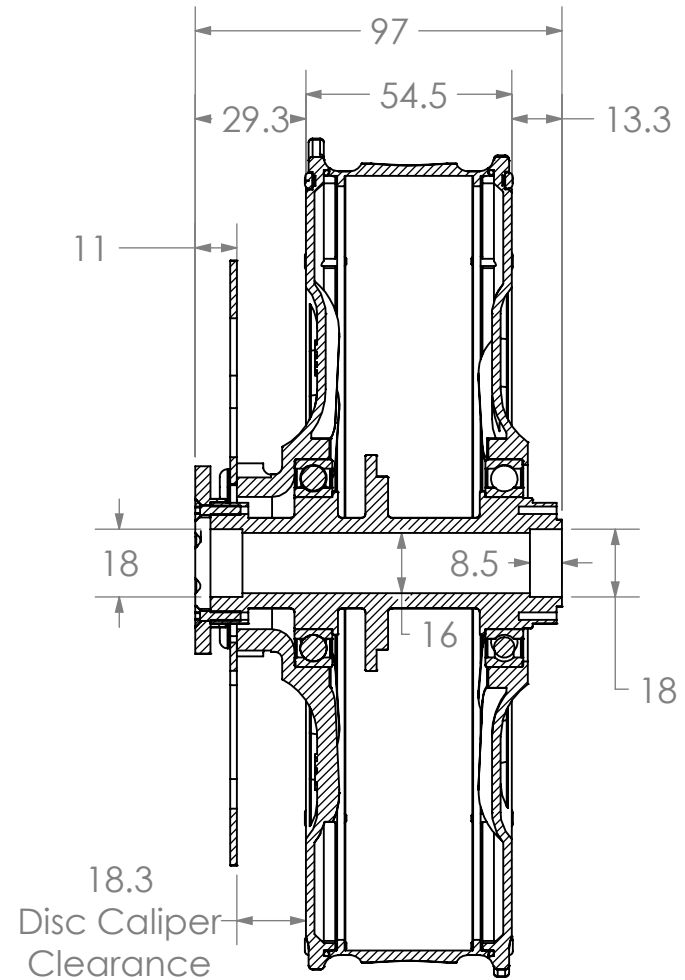
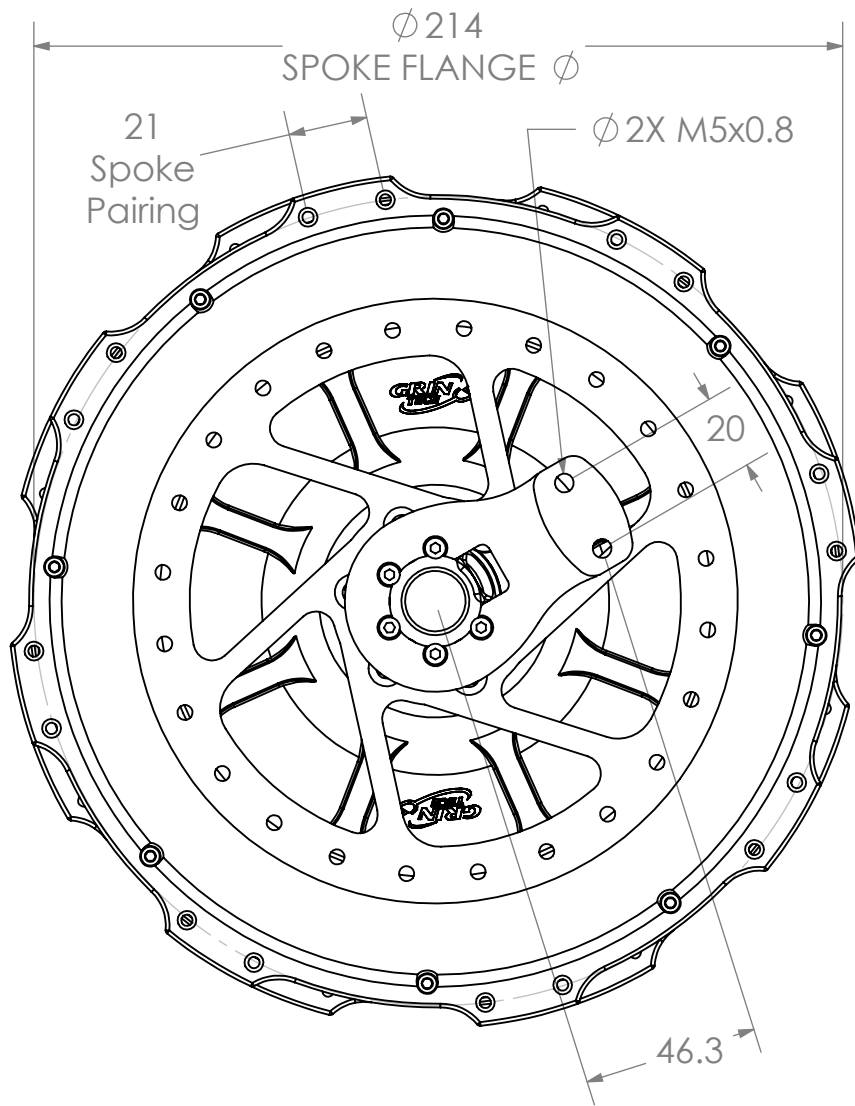
DRAWN: Justin L-E.
 DATE: 09-24-2024
www.ebikes.ca
 Relevant dimension drawing in mm for external use
 Designed, Drawn and Made in Canada

MATERIAL: N/A
 WEIGHT: ~4.0kg
 SURFACE FINISH: Anodized Alum
 SCALE: 1:2

DESCRIPTION:
15x150 Thru Axle Adapters



REFERENCE USE ONLY
 THE INFORMATION CONTAINED IN THIS DRAWING IS THE SOLE PROPERTY OF GRIN TECHNOLOGIES. ANY REPRODUCTION IN PART OR AS A WHOLE WITHOUT THE WRITTEN PERMISSION OF GRIN TECHNOLOGIES IS PROHIBITED.



PART NO:
Grin All-Axle V3 Front Hub Motor

REVISION:
0

DRAWN: Justin L-E.
DATE: 09-24-2024
www.ebikes.ca
Relevant dimension drawing in mm for external use
Designed, Drawn and Made in Canada

MATERIAL: N/A
WEIGHT: ~4.0kg
SURFACE FINISH: Anodized Alum
SCALE: 1:2

DESCRIPTION:
Single Side Adapters



REFERENCE USE ONLY
THE INFORMATION CONTAINED IN THIS DRAWING IS THE SOLE PROPERTY OF GRIN TECHNOLOGIES. ANY REPRODUCTION IN PART OR AS A WHOLE WITHOUT THE WRITTEN PERMISSION OF GRIN TECHNOLOGIES IS PROHIBITED.