

PART NO:  
Max45 Single Speed Motor

REVISION:  
0

DRAWN: Justin L-E.

MATERIAL: N/A

DATE: 05-01-2026

WEIGHT: ~6.2kg

[www.ebikes.ca](http://www.ebikes.ca)

SURFACE FINISH: Anodized Alum

DESCRIPTION:  
Quick Release Inserts for Slotted Dropouts

Relevant dimension drawing in mm for external use

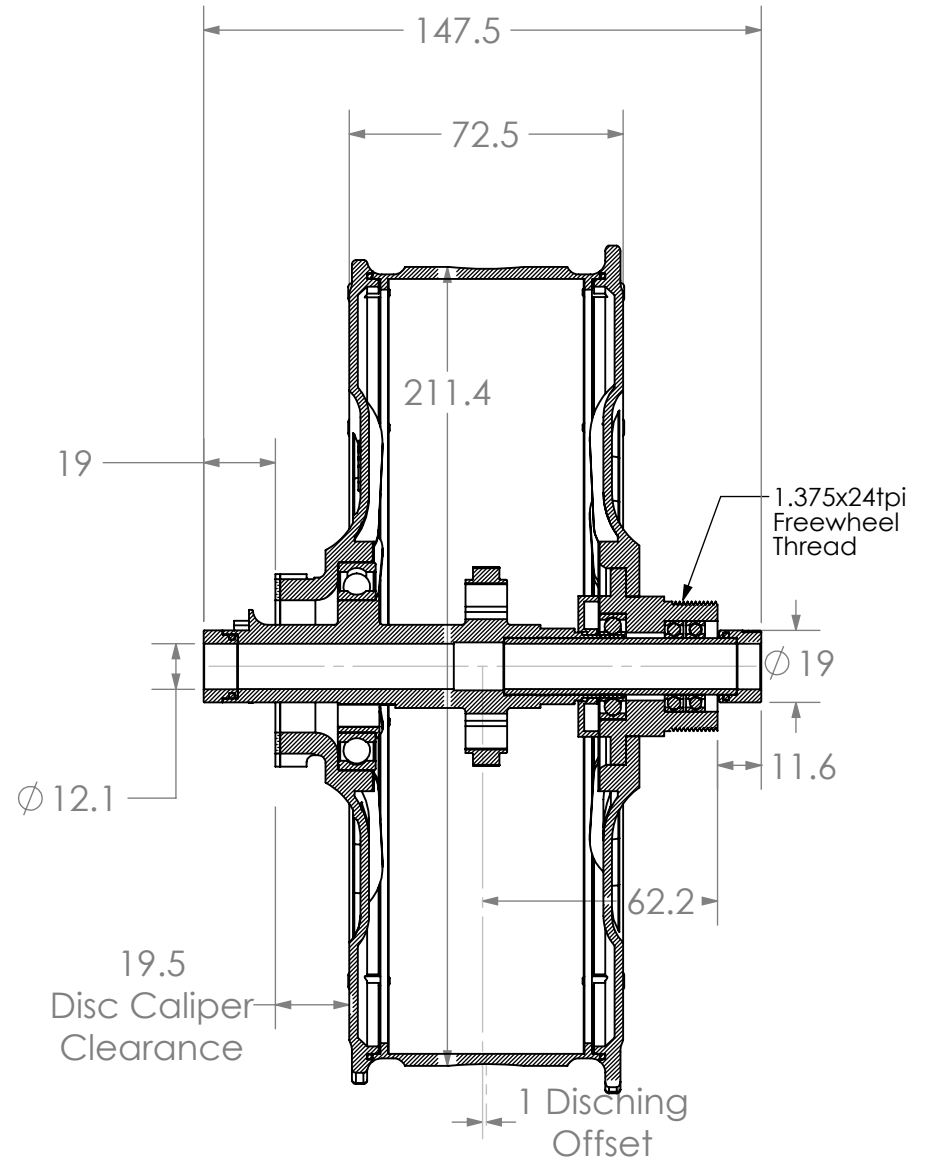
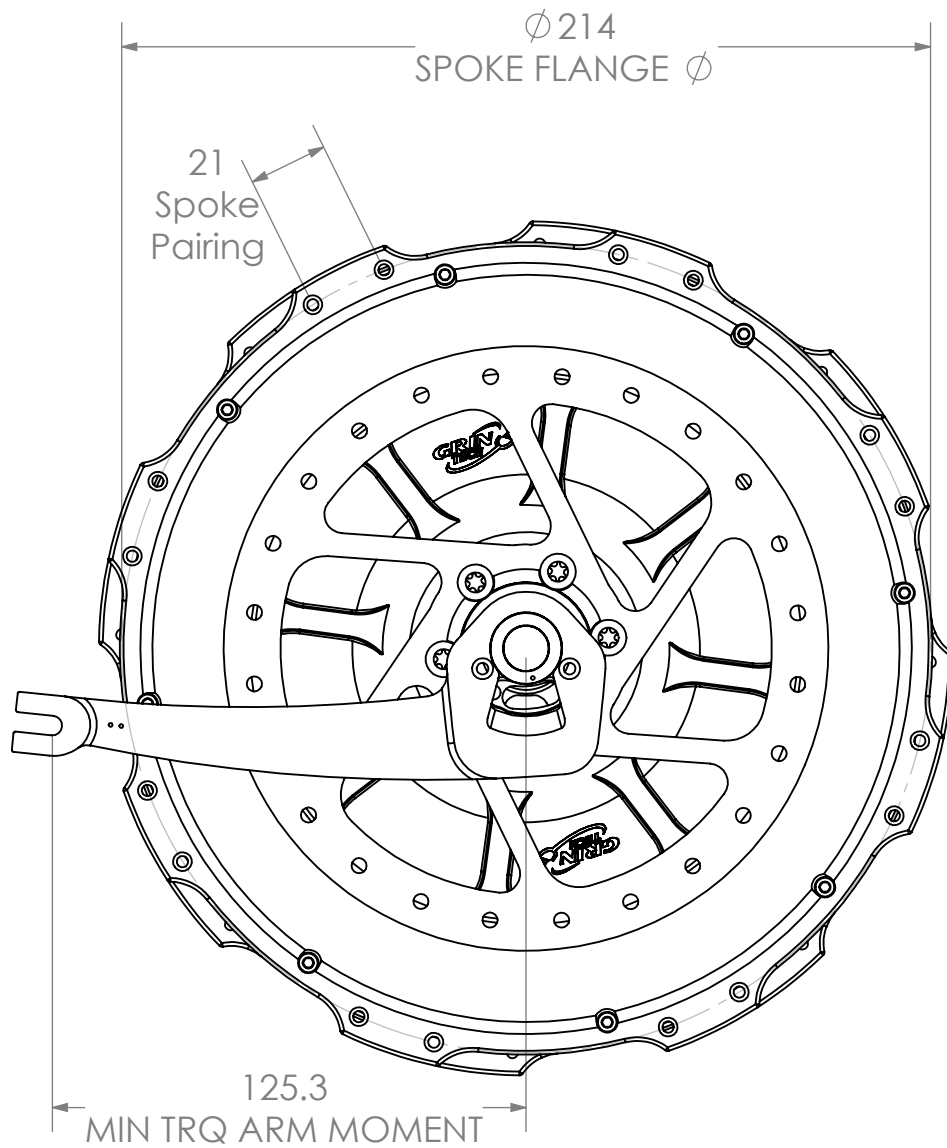
Designed, Drawn and Made in Canada

SCALE: 1:2



REFERENCE USE ONLY

THE INFORMATION CONTAINED IN THIS DRAWING IS THE SOLE PROPERTY OF GRIN TECHNOLOGIES. ANY REPRODUCTION IN PART OR AS A WHOLE WITHOUT THE WRITTEN PERMISSION OF GRIN TECHNOLOGIES IS PROHIBITED.



PART NO:  
Max45 Single Speed Motor

REVISION:  
0

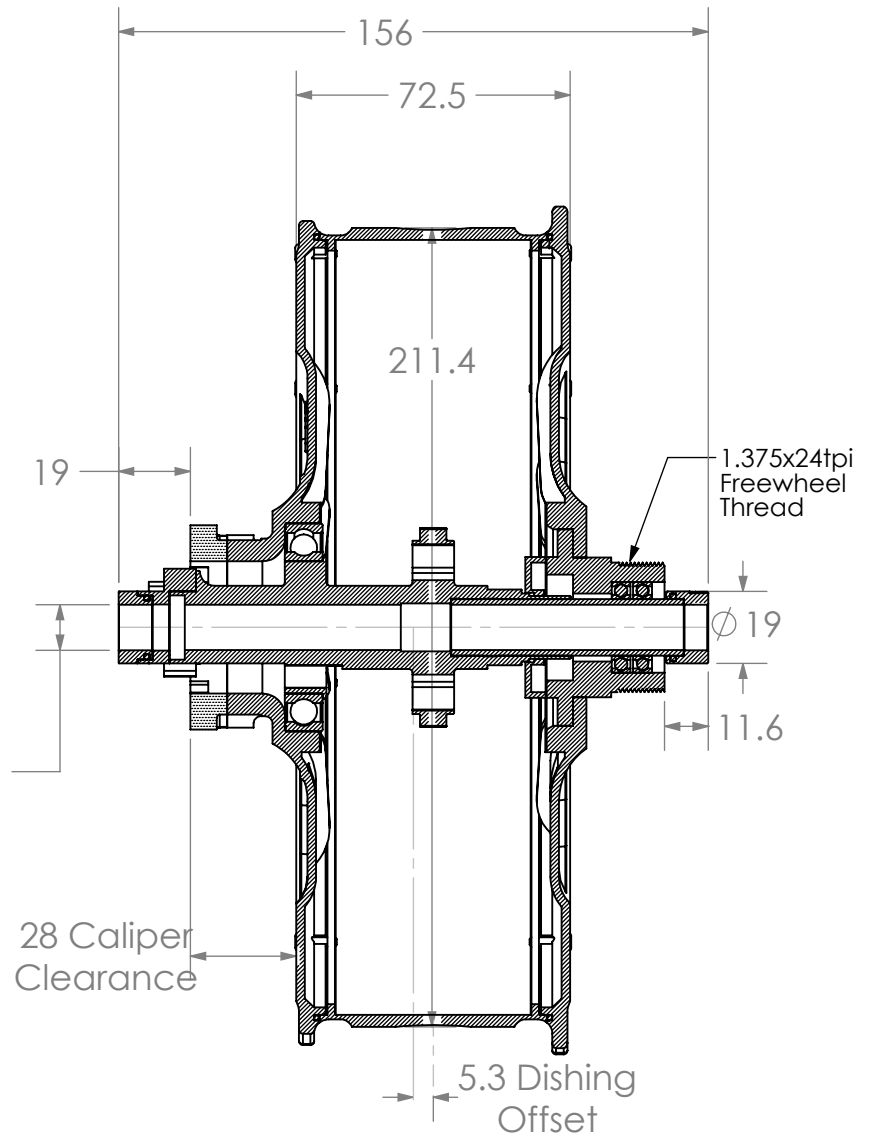
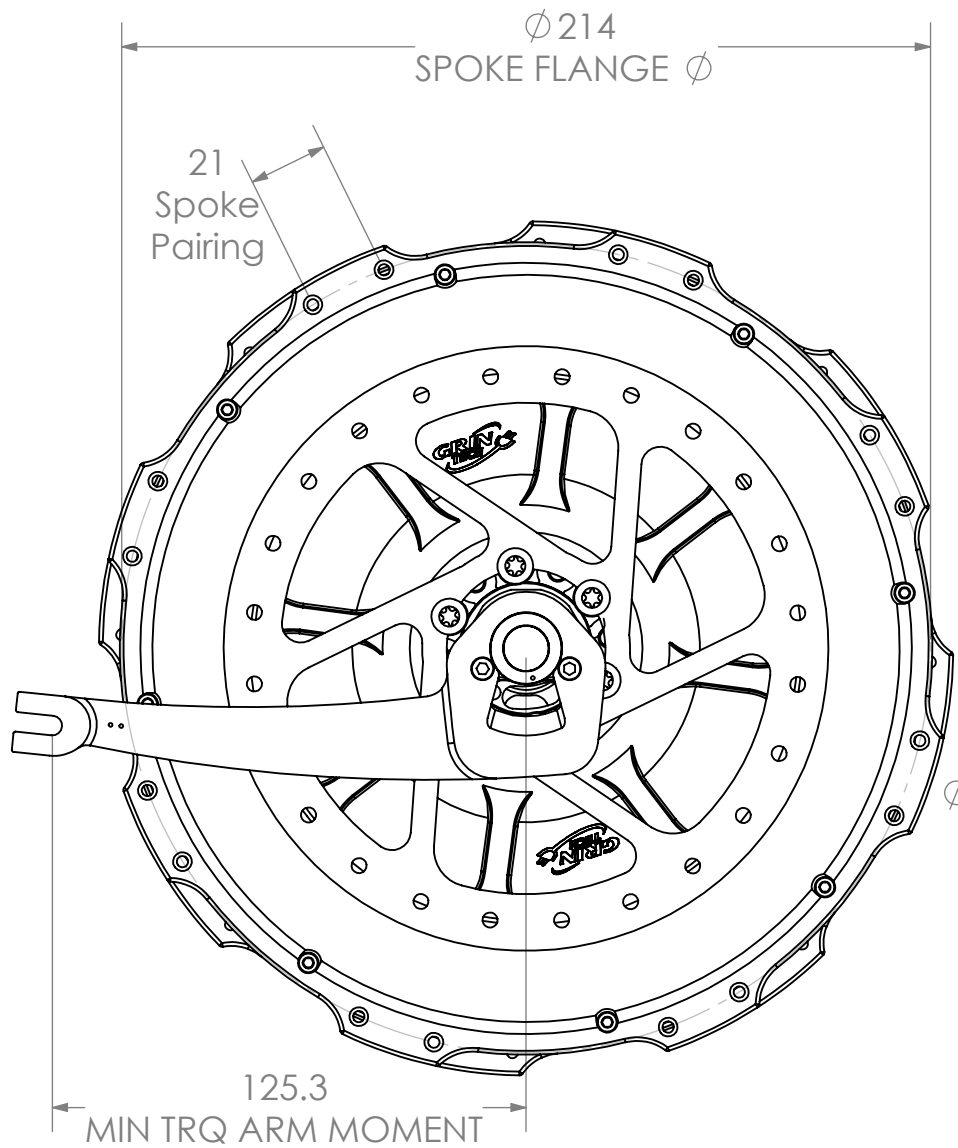
DRAWN: Justin L-E.  
 DATE: 05-01-2026  
[www.ebikes.ca](http://www.ebikes.ca)  
 Relevant dimension drawing in mm for external use  
 Designed, Drawn and Made in Canada

MATERIAL: N/A  
 WEIGHT: ~6.2kg  
 SURFACE FINISH: Anodized Alum  
 SCALE: 1:2

DESCRIPTION:  
Thru-Axle Inserts for 148x12 Boost



REFERENCE USE ONLY  
 THE INFORMATION CONTAINED IN THIS DRAWING IS THE SOLE PROPERTY OF GRIN TECHNOLOGIES. ANY REPRODUCTION IN PART OR AS A WHOLE WITHOUT THE WRITTEN PERMISSION OF GRIN TECHNOLOGIES IS PROHIBITED.



PART NO:  
Max45 Single Speed Motor

REVISION:  
1

DRAWN: Justin L-E.

MATERIAL: N/A

DATE: 06-03-2026

WEIGHT: ~6.2kg

[www.ebikes.ca](http://www.ebikes.ca)

SURFACE FINISH: Anodized Alum

DESCRIPTION:  
Thru-Axle Inserts for 157x12 Superboost

Relevant dimension drawing in mm for external use

Designed, Drawn and Made in Canada

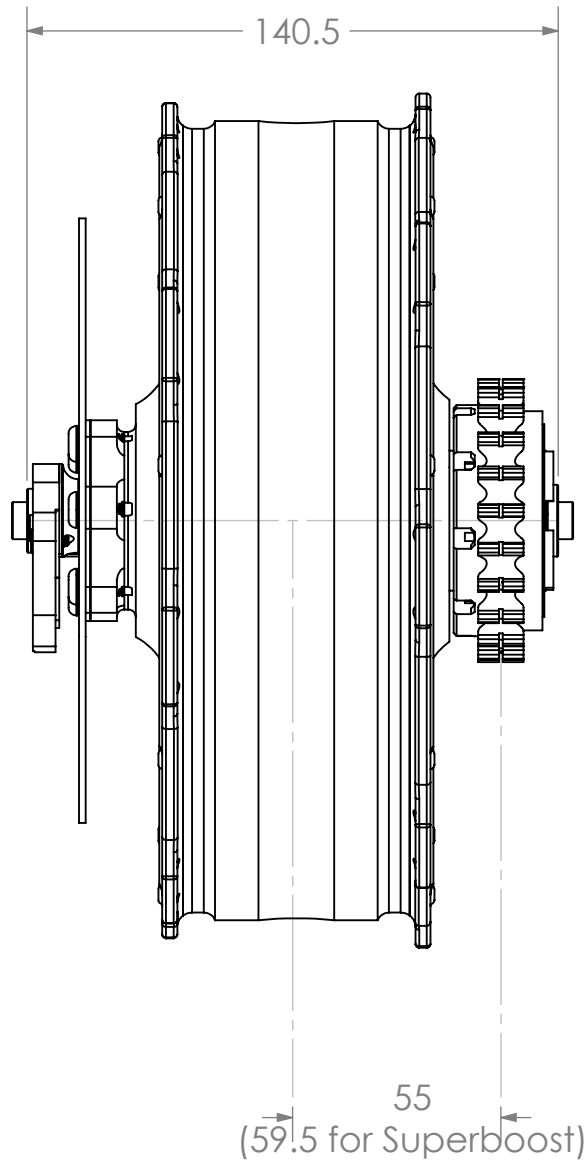
SCALE: 1:2



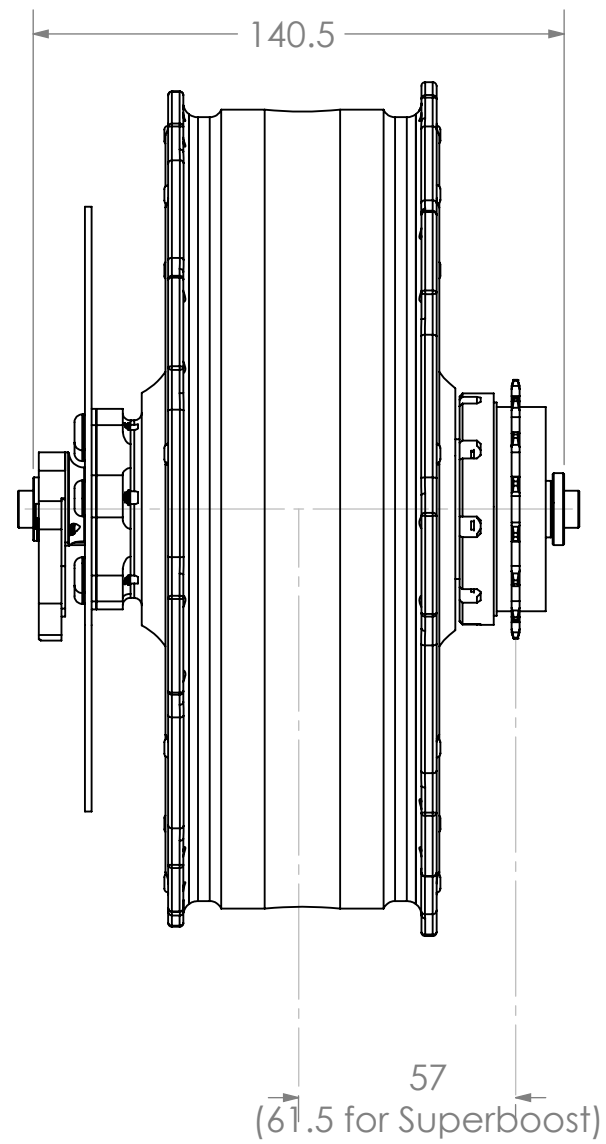
REFERENCE USE ONLY

THE INFORMATION CONTAINED IN THIS DRAWING IS THE SOLE PROPERTY OF GRIN TECHNOLOGIES. ANY REPRODUCTION IN PART OR AS A WHOLE WITHOUT THE WRITTEN PERMISSION OF GRIN TECHNOLOGIES IS PROHIBITED.

22T Pulley for CDX Belt Drive



16T Freewheel for Chain Drive



PART NO:

REVISION:  
1

DRAWN: Justin L-E.  
DATE: 05-03-2026  
[www.ebikes.ca](http://www.ebikes.ca)  
Relevant dimension drawing in mm for external use  
Designed, Drawn and Made in Canada

MATERIAL: N/A  
WEIGHT: ~6.2kg  
SURFACE FINISH: Anodized Alum  
SCALE: 1:2

DESCRIPTION:  
Details for Gates Drive and 16T Sprocket



**REFERENCE USE ONLY**  
THE INFORMATION CONTAINED IN THIS DRAWING IS THE SOLE PROPERTY OF GRIN TECHNOLOGIES. ANY REPRODUCTION IN PART OR AS A WHOLE WITHOUT THE WRITTEN PERMISSION OF GRIN TECHNOLOGIES IS PROHIBITED.